



<http://designkaboodle.com>

## Bev's Tutorial

### Run Compatibility Mode

tutorial url : Design Kaboodle.com

<https://designkaboodle.com/blog/run-compatibility-mode/>

We all have programs we all love & use .. When we get a new computer or upgrade Windows to a newer version,, Sometimes our programs & plugins does not work in the new Windows Version ..

In Windows 7 or 10 you can run programs or plugins in a earlier Windows versions in a older Windows Version compatibility mode.

This makes Windows , your computer and programs and plugins run better without hurting your computer.

Sample lets say you have Windows 10 now you can run a program in older version like Windows XP, 7, 8 or even Windows 98

Plus some of our very old plugins that has a installer apps it works for them two .. like Eye Candy 3 & 4 5 & Filters Unlimited2 and Xenoflex1 and 2 this Filters Unlimited 1 has stop working period .. will not install

#### Please Note\*\*

I recommend if you did every step in our plugin trouble shooter tutorial <http://designkaboodle.com/blog/psp-help/psp-plugin-trouble-shooter/> and still having trouble to run Paint Shop Pro and Plugins in a older Windows version like Windows 7 or what ever

#### Please Note\*\*

In older days ... you had to have Windows XP, 7 -10 Pro or Ultimate Edition to do this

Compatibility Mode.. But !!....

Now I have heard things changed in Windows 10 Home not sure if it is true. because I have Windows 10 pro

I was told by Connie ( thanks Connie ) this works in Windows 10 Home Edition too.. if this is true . that is a good thing .

If you have Windows 10 Home try it and see if you have it .. and please let me know about Windows Home so I can update my tutorial if I need to .

## **There is to ways 2 do this**

I was told if you have Windows Home that you had to do the 2nd step .. if you have Windows Pro you can do either step

### **Step 1: For Windows XP -10 Pro Users:**

#### **Do Steps 1 & 3**

You do this Before & After Installing program and plugins both

I use this method mostly it is faster and easier .. I will be using Paint Shop Pro 32 bit for my example

**A:**Go To Program desktop icon or installer app Right Click / Properties or More / Properties under the Compatibility tab under compatibility mode

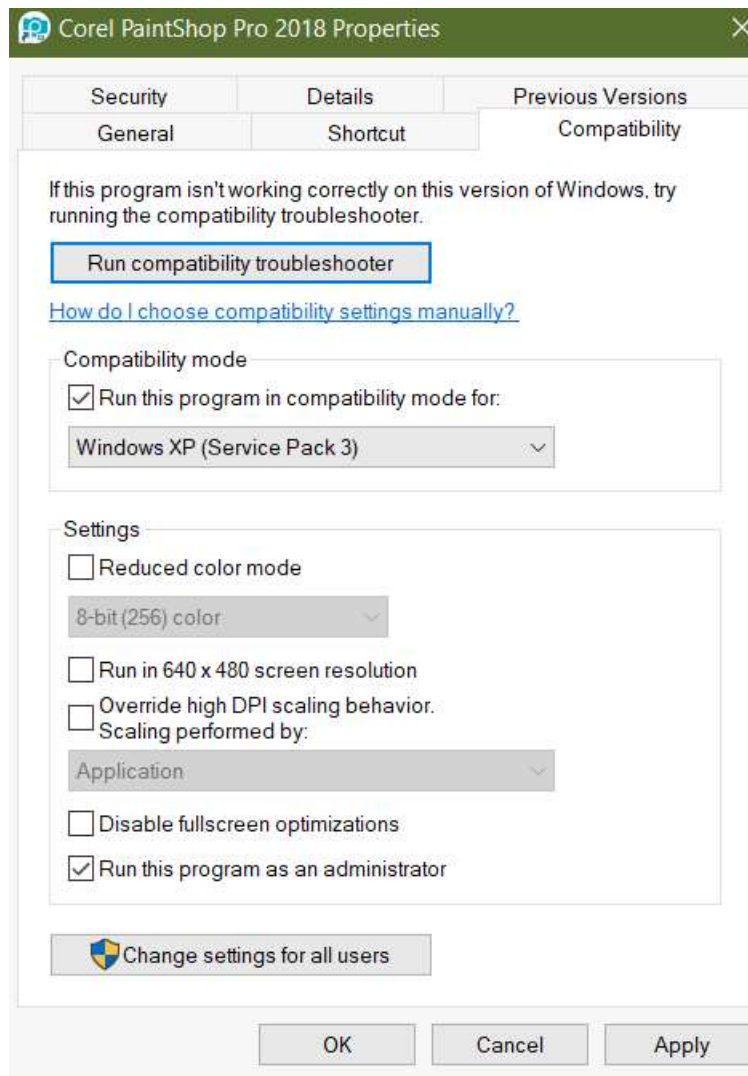
**B:** pick which version you want usually Windows XP Service pack 2 or 3 or Windows 98 works better on plugins..I usually pick Windows XP service pack 3

**C :** Under Application Check Mark Run this program as an Administrator press Apply

and Ok... ( see image below click thumbnail for better view )

**D :** After Install program or plugin Repeat steps A- C with the new desktop icon that was installed & then do step 3 below

if you do see desktop icon after install there is one in your in your program's folders under C: Drive ,,,



## Step 2: Windows 10 Home Users & For Windows XP -10 Pro Users:

**You do this Before & After Installing program and plugins**

**Do Steps 2 & 3**

**Before install :** Go To Program installer app Right Click / Properties or More / Properties under the Compatibility tab under compatibility mode

Under compatibility mode , pick which version you want . Usually Windows XP Service pack 2 or 3 or Windows 98 works better on plugins Under Application Check Mark Run this program as an

Administrator press Apply

**After Install Do these steps**

**A:**

Windows 7 -

Go To Start/Control Panel/Programs / Run programs made for previous versions of Windows

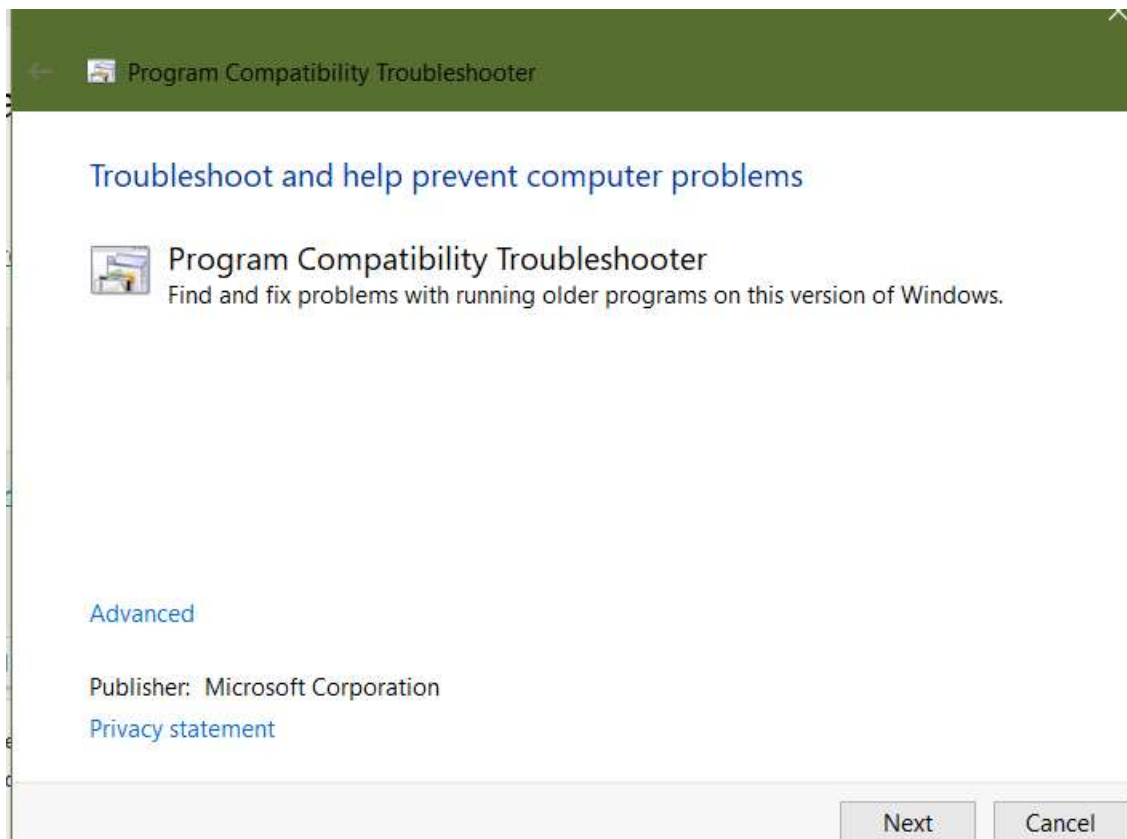
Windows 10

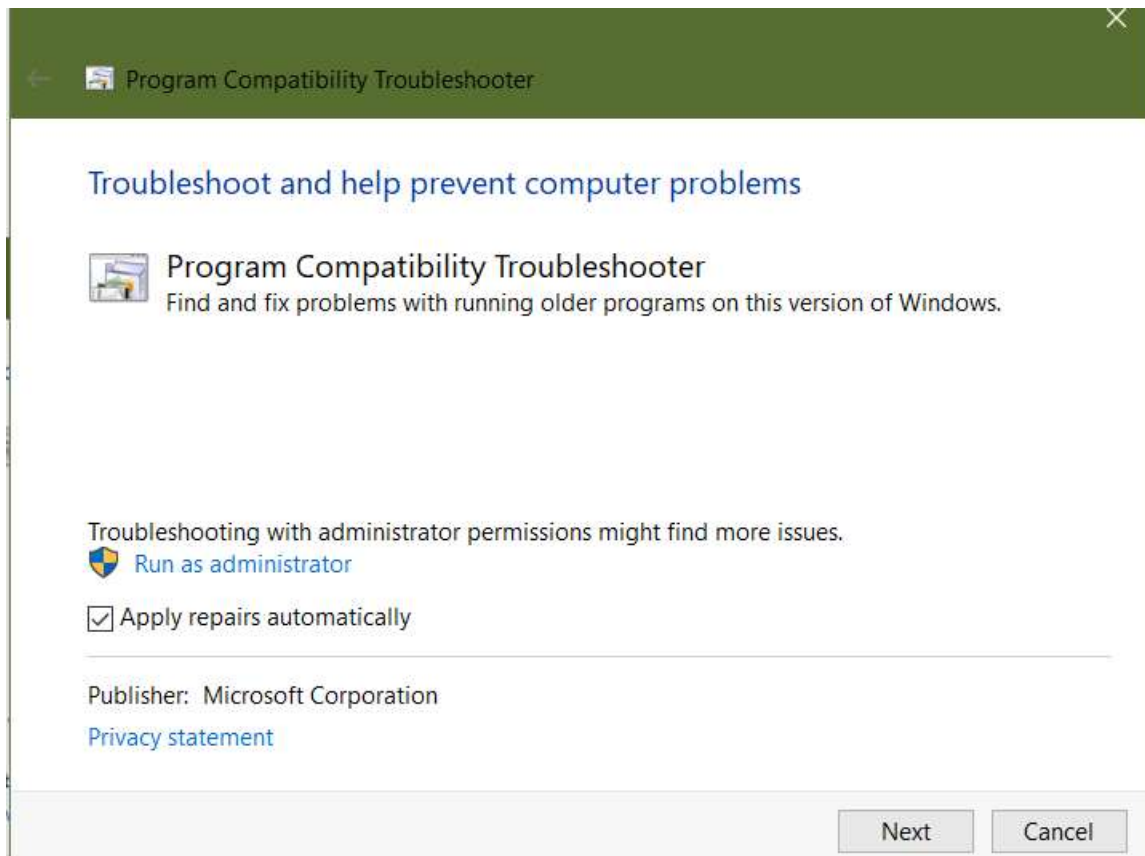
Go To Start in Search Box put in " Run programs made for previous versions of Windows Compatibility " or

Go To Start/Control Panel/Programs / Run programs made for previous versions of Windows

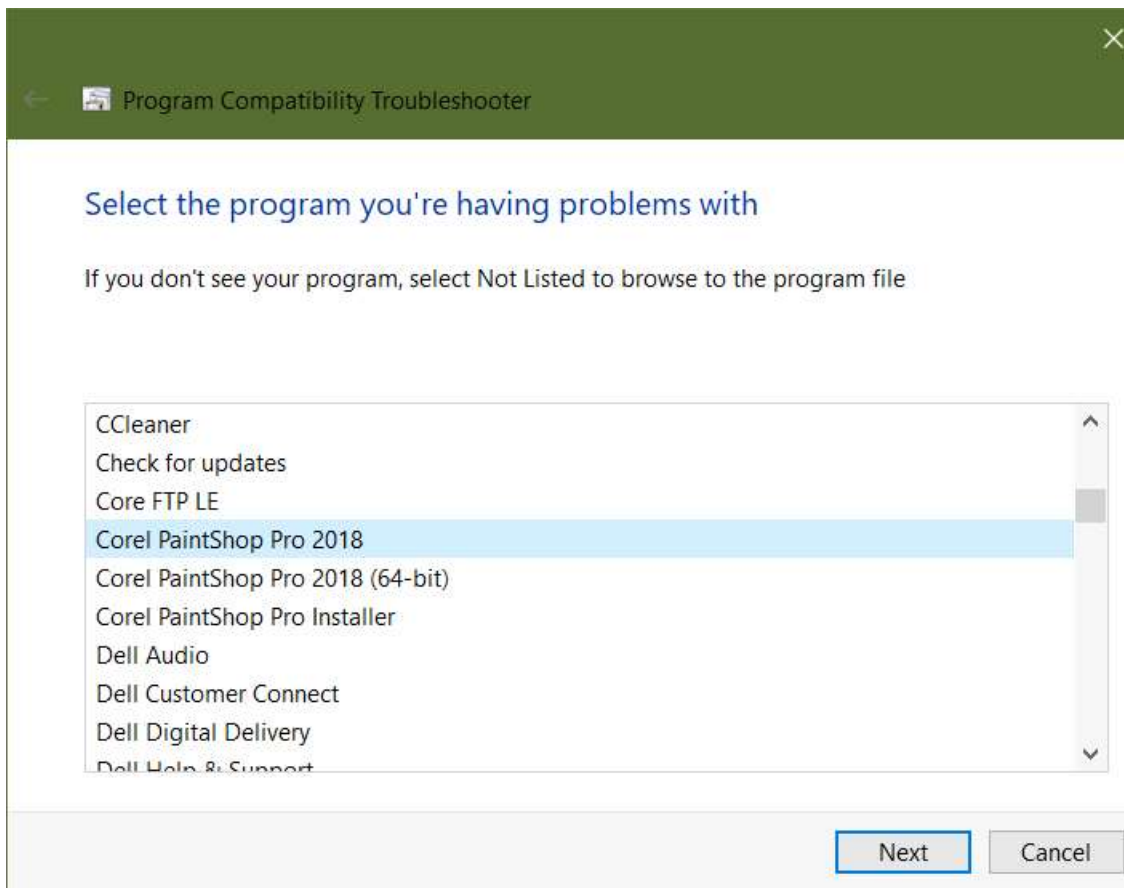
A pop up box will appear on the popup

you will see Advance press that and check mark Run as an Administrator press Next ( **see images below click thumbnails for better view** )



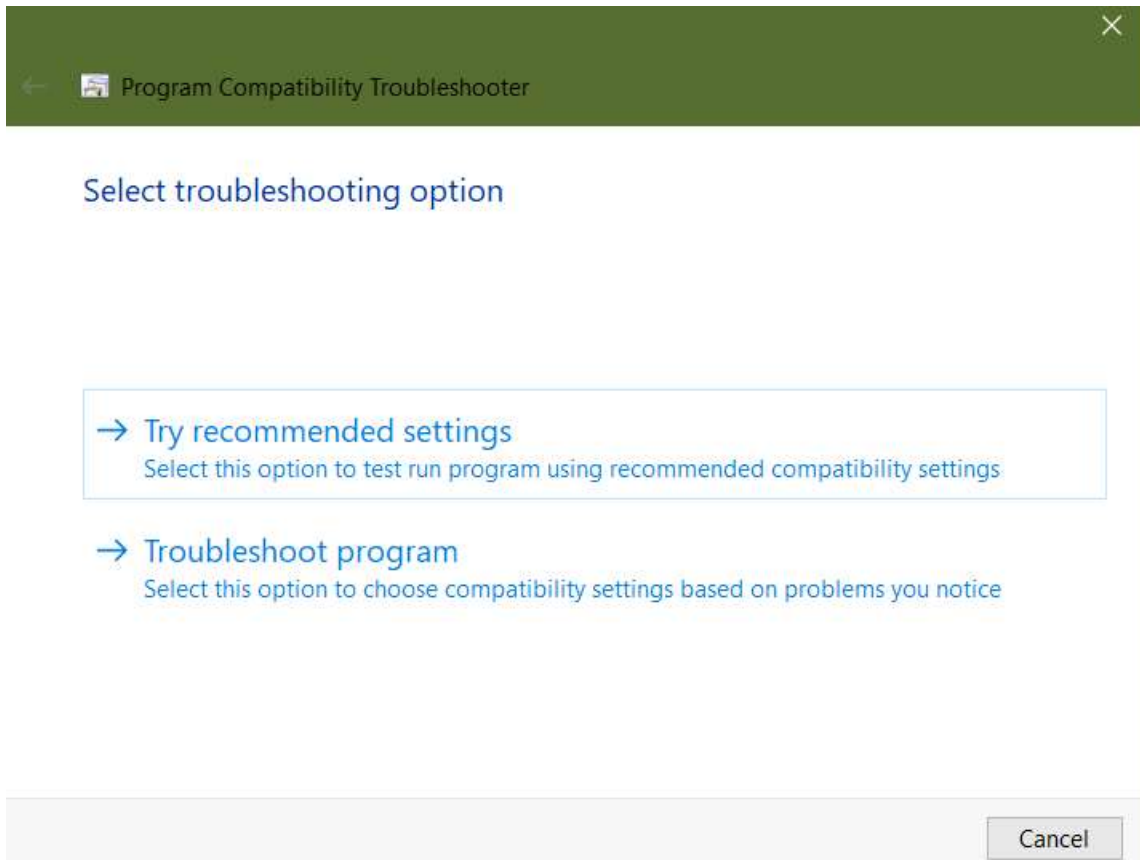


**B:** another popup will appear pick your program Sample I picked Paint Shop Pro 32 bit & it might ask you what Windows version ran this program pick the version if it ask you



C: Press Next then you Will " See Try Recommended setting" & "Troubleshoot program " pick Try Recommended setting first if that does not work try Troubleshoot program option .. it will let you Test the program and then it will ask you if you want to save Changed settings

**( see image below click thumbnail for better view )**



**D** : do step 3 below

### Step 3: Windows Pro & Windows Home Do This Step :

Give Yourself Full Control of The Program or Plugin that way you have full control over the program or plugins.. we hope

#### **Please Note This\*\***

This step Also opens Paint Shop Pro it opens the paint shop pro without Program User Control Thing asking you if you want to open PSP each time

#### **Please Note \*\***



You do this before you install the program or plugin with the installer app.

And you also do this after you install the program/plugin with the program desktop

With the program /plugin you are wanting to install

**A:** Go To Program /plugin- Installer app or desktop icon

Right Click / Properties or More / Properties under the Security tab pick your user name and give it Full permission if your name it is not there add it ( press add )

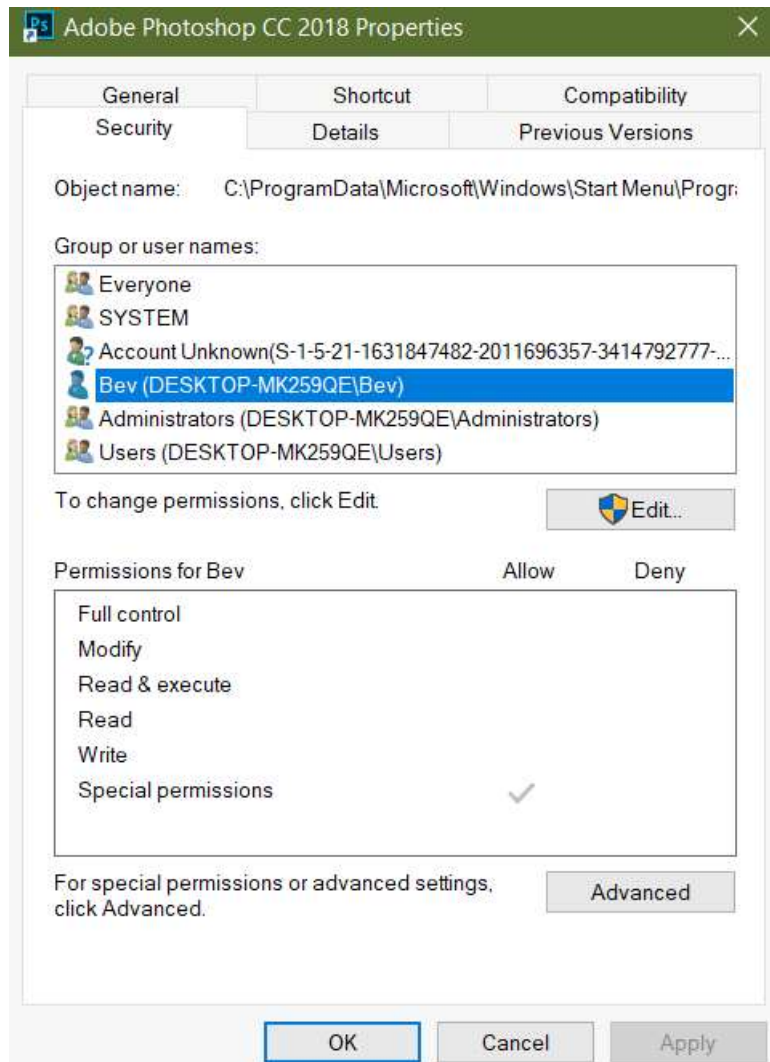
**B:** then press the edit button .. give yourself full control by check mark Full Control then press Apply and Ok and ...

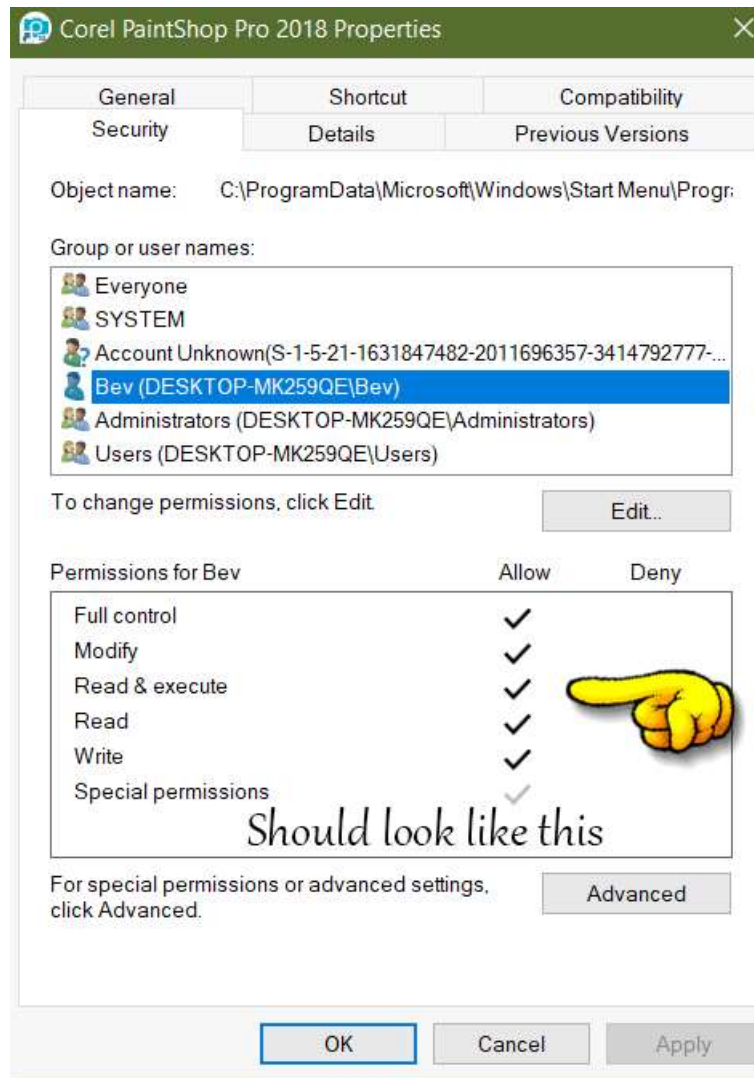
Check to see if Administrators has full control too. if not give Full control to Administrators to

( see images below click thumbnails for better view )

**C:After you install** Go To Program /plugin Desktop desktop icon to and do steps A & B above

Now if you do not see the desktop icon . there is one in your program files under C: Drive now if you have a 64 bit computer and have PSP 64bit you can do that one to if you want





You might not have to this below , if you did the steps above and everything is working.

**D:** Now I do this for my plugins Eye Candy Filters Unlimited 2 it gives me fits every time I install ... lets say I am working on Eye Candy 4...

I do all the steps above in steps 1 and 3 then.. I go to where Eye Candy is installed at and in the eye candy folder I give myself full control to each file and folder ( **Step C above** ) in the Eye Candy 4 plugin folders .. that is the only I can get Eye Candy to work.. for me

That is about it I'm so sorry this is long just trying to get everything covered I hope this helps you out and gets your plugins working ..

**and please contact me** ( Bev ) if you need help here on the blog  
<http://designkaboodle.com/blog/contact/> or at The Bag A Snag Forums  
<http://bagasnag.forumotion.com/>