



<http://designkaboodle.com>

Bev's Tutorial

Install PSP if You Have 64 Bit

tutorial url : Design Kaboodle.com

<http://designkaboodle.com/blog/psp-help/install-have-bit/>

Installing PSP X6 -PSP 2022 installs different then the old way (PSP 9 – PSP X5) and older psp versions if you have a 64 bit computer and it can be confusing and hard to set up your PSP

Corel and others do not come out and say this or I have not run into other tutorials how to really install and set up the PSP X6-2022 if you have a 64 bit computer I will admit I always had 64 bit since Windows XP but I updated my old PSP9 to X6 and I had trouble at first and I come out and ask Corel for help ..

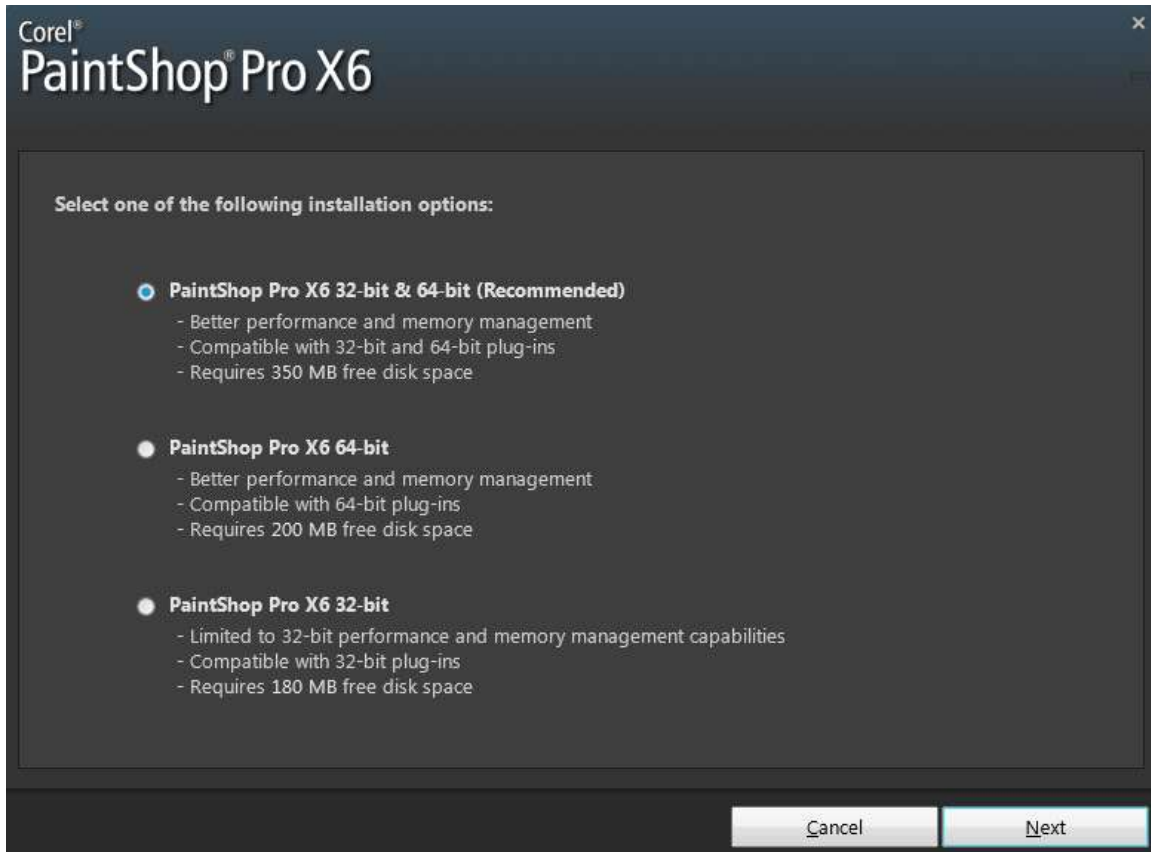
so I hope this helps & this might be long so sorry about that please read all of it

I have now the latest PSP 2022 but the screen shot says PSPX6 These directions are the same for versions PSPX6 , PSP x7, PSP X8 PSP X9 & PSP 2018,PSP2019, PSP2020,PSP2021, PSP 2022

Installing PSP

1: After you start your PSP install and agree to terms , and you put in your code /key in you will see a screen like this one you have 3 options

I recommend to install Both 32 & 64 bit (Top Option) in the install



A: If You Install Only 32 bit

Note * You Can use your old plugins that you have .You but not use the new plugins 64 bit and most new plugins are 64 bit now a days

You will need to download plugins as 32 bit instead of 64 bit from sites that offer both bits

B: If You Install Only 64 bit

Note * You can not use your old favorite plugins that you have at all period no matter what you can only use the new plugins 64 bit.

& you will need to download plugins as 64 bit instead of 32 bit from sites that offer both bits

****C: Install Both 32 & 64 bits (recommend) Top option in install screen**

If you do not choose any options it installs both 32 and 64 bit on your computer automatically Corel & I recommend you install both and use both. So you can use both you old plugins that

you love and have used for years they are 32 bit & be able to use the new 64 bit plugins that is now coming out.

2: After you finish the install do your updates to PSP I usually do my updates right after install and before setting up .. and it should already have a link Under Help /Menu to Check Updates if not

You can download and install Updates and Patches for PSPX8-2022

<https://www.paintshoppro.com/en/support/updates/>

3 : Make sure you put in your DLLs .. you can get them

<https://designkaboodle.com/blog/psp-help/paint-dlls-downloads/>

4: Do the After Install & Setting Up below specially the plugin folders

5 : I recommend after doing everything to reboot/restart computer before playing in psp

AFTER INSTALL & SETTING UP :

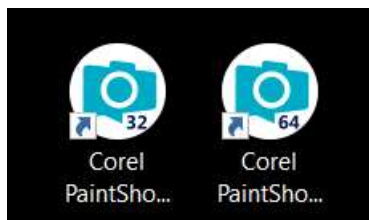
I will try to help seriously it is not hard just a little different then what you are used to from past PSP versions installs

Just a reminder if you only installed PSP 64 bit and not 32 bit to .. your old favorite plugins will not work period ! no matter what you do that is why I recommend to install both 32 and 64 bit .. to use all plugins

If you installed Both 32 bit & 64 bit please read on .. which I recommend to do it might be a little confusing ...

2 WORK SPACES & 2 ICONS & 2 DIFFERENT PLUGIN FOLDERS

After you install both 32 & 64 bit you will see 2 icons on the desktop & you will see 2 PSP desktop icons (one says 32 & the other 64)



You have 2 different PSP workspaces screens one 32 bit and the other 64 bit . You have to set

up both screens & direct 32 screen and 64 screen to the folders

Both 32 and 64 bit work screens can share all the same folders (mask, patterns, brushes & etc) in your Documents PSP Folders except for the plugins .(see below under Special Plugin Folder) ...

You can not run both screens at the same time ..

Tip : I use PSP 32 bit more and have PSP 32 icon on my Taskbar /Desktop and have PSP64 icon on my start screen in programs list I do this ... just to keep me from getting confused.

Please Note *

If you do signature tag making you will mostly use 32 bit more ,Plus you will still need to use your FM Patcher tool to patch some of your old plugins

<https://designkaboodle.com/blog/psp-help/fm-patcher-directions/>

But the 64 bit workspace comes in handy for the new 64 plugins .That does not work in 32 bit & all the new plugins is coming out now a days in only 64 bit versions . And it great for big projects or printing pictures too

Most all favorite old plugins go in the 32 work screen Plugin Folder.

SPECIAL PLUGIN FOLDER:

Plugins are set up different for the new PSP and Computers follow directions below & if you are still having trouble with plugins.Please see our Plugin Trouble Shooter to set them up

<https://designkaboodle.com/blog/psp-help/psp-plugin-trouble-shooter/>

This is How I sat My Plugins up:

I made Plugin folder on My Documents / Documents

My Documents or Documents/ Plugins

With a sub folder for 32 bit and a sub folder for 64 bit it looks like this

My Documents or Documents/ Plugins /32 bit

My Documents or Documents/ Plugins /64 bit

You must set up you plugin file locations in both in PSP 32 and PSP 64 work screens.

In PSP / File/ Preference/ File Location

PSP 32 work screen must be directed to 32 bit plugin folder & the PSP64 work screen must be directed to 64 bit plugin folder

Sample mine is directed

32 PSP work screen plugins is directed to Documents/ Plugins /32 bit

64 PSP work screen plugins is directed to Documents/ Plugins /64 bit

Be Sure To Set Administrator Rights for PSP both for PSP 32 & 64 bit

How to set up Administrator Rights Go here and look Under No 6# SET Administrator Rights For PSP on the Computer.

<https://designkaboodle.com/blog/psp-help/psp-plugin-trouble-shooter/>

To be Honest for me ... all the old plugs Eye Candy, 3 & 4 5 , Toadies, Xero FM Tools, Filters Unlimited and etc ... that you have goes in the 32 bit plugin folder and only work in PSP 32 work screen

please note* The New Super Blade Pro & new Versions of Eye Candy 6 & 7 are 64 bit now...

The 64 bit plugins like the free Google Nik Collection & New Super Blade Pro New Eye Candy 6 & 7 will go in your 64 bit plugin and work only in PSP 64 workspace screen

Like I said above you must still use your FM Patcher Tool to patch some of the old plugins but it should work .

<https://designkaboodle.com/blog/psp-help/fm-patcher-directions/>

and please contact me (Bev) if you need help here <http://designkaboodle.com/blog/contact/> or at The Bag A Snag Forums <http://bagasnag.forumotion.com/>

If you are still having trouble with your plugins try our Plugin trouble shooter tutorial here

<https://designkaboodle.com/blog/psp-help/psp-plugin-trouble-shooter/>