



<http://designkaboodle.com>

Bev' Tutorials: Re -Add Old Mirror And Flip Tool Back

tutorial url <http://designkaboodle.com/blog/psp-help-tutorials/mirror-tool-back>

download script at the tutorial url above

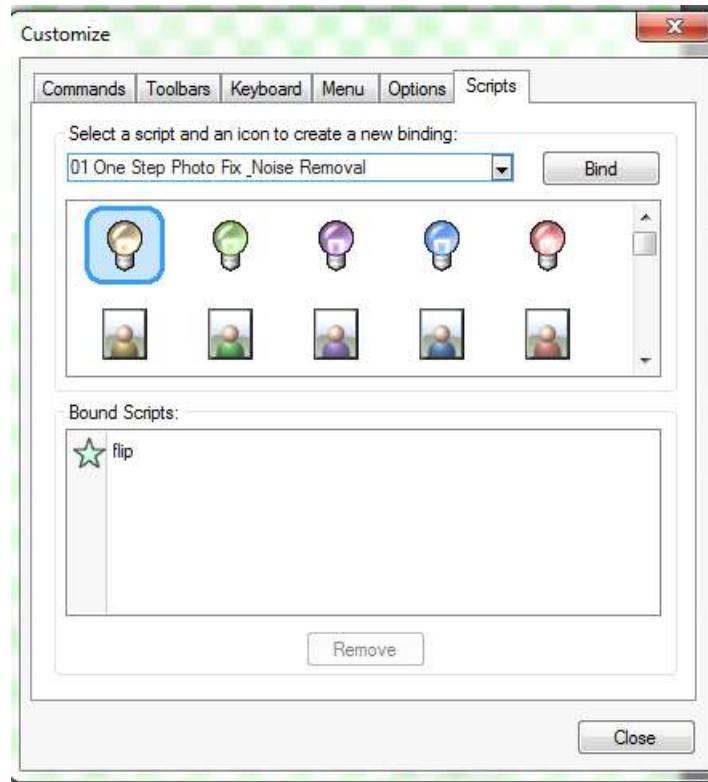
Please Note : The Old Mirror & Flip tool option under Image is missing they took those off in PSP X4 this applies to all psp to the current version ... but they can be re-added they are not in the customize area but they can be added real easy with a script ..

Not sure why they messed with this two tools & they claim they improved flip & mirror even if the new flip and mirror is neat ..they are not the same as the old ones I like the old mirror and flip tools better you can re-add the old mirror and flip to go with the new Flip & mirror tools through using scripts you need to download these scripts..

1: Put the scripts in the Scripts folder in the PSP folders in Documents area

Location :My Documents/Document Corel PaintShop Pro/14 or 15 or 16 /Scripts-Restricted Folder

2: In PSP Go to View/ Customize/Scripts (*see below photo click thumbnail for a view*)



3: Under select a script you will see a drop down menu click and pick flip or mirror then pick a icon that you want for the tool and press bind (see sbove photo click thumbnail for a view)you can add both if you wish

4: While the box is still open under Bound Scripts (see image above) you will see the little icon you picked and the text flip or mirror

5: Go to Menu /Image and drag and drop the little icon where you want it in your menu .. I usually drop it with the other Flip Horizontal and Flip Vertical (see below photo click thumbnail for a better view)

6: Save your Workspace I usually close and reopen the psp to check if it took if you need to re-install psp for any reason or fix your your workspace tools to fix a problem in psp you will need to re-add the scripts

